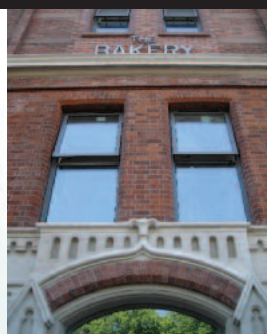


# The Bakery

IT'S TIME TO LIVE LIFE IN STYLE



THE BAKERY, ORMEAU ROAD  
BELFAST'S FINEST APARTMENTS

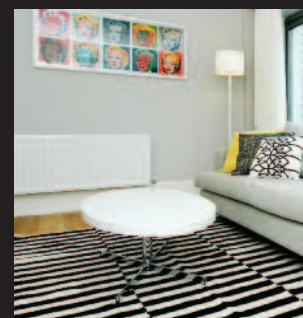
# Established 1890

## DISCOVER BELFAST'S FINEST APARTMENT

History, character, elegance and sophistication are all hallmarks at The Bakery, Ormeau Road, a new development that is set to become Belfast's most fashionable residential address.

The Ormeau Bakery was opened by Robert Wilson in 1890 and thrived under three generations of the Wilson family, the exterior of the building changing little over the years. Appreciating the character and historical qualities of the building and recognising its idyllic location, just across the road from arguably the city's best public park, the developers, Big Picture set out to create Belfast's finest apartment development.

Quality constructed by Graham contractors, the result is a sensitive retention and refurbishment of the notable existing facades of the original building and the forming of 156 large one and two bedroom apartments.



# Reinvented 2009

## APARTMENTS AT THE BAKERY, ORMEAU ROAD.

All original large window openings have been retained along with tall ceiling heights where possible, giving the apartments a character and personality many new residential developments do not possess.

The impressive main entrance foyer is finished in black and white tiling and painted wall paneling to echo the grand style of the original lobby. Carefully restored black and white imagery of day to day life at the bakery tells a pictorial tale of the unique heritage of the building.

### Amenities on your Doorstep

Ormeau Park, Ormeau Golf Club, pubs, shops, cafes and restaurants are literally on the doorstep and the Ormeau area of the city continues to grow in popularity. A pleasant walk along the River Lagan and through Botanic Gardens brings you to Queens University Campus.

### Quality Features

- High quality internal specifications include: fully equipped kitchens, superbly finished bathrooms, video intercom system. Quality hardwood floor in all living rooms and halls.
- Dramatic Courtyard Gardens designed by Diarmuid Gavin.
- Glazed central link with specially designed, glass backed lifts allowing views to the courtyard gardens below.
- Air conditioned penthouse gym with roof terrace for the sole use of The Bakery residents.
- Quality prevails through all common areas from the grand entrance foyer to the corridors which are finished in a specially commissioned Ulster Carpet.
- Focus on security for residents and visitors alike with 15 CCTV cameras in common areas and the car park.
- Secure car parking with high speed roller shutters.



The Bakery  
IT'S TIME TO LIVE LIFE IN STYLE

# DIARMUID GAVIN AT THE BAKERY



Diarmuid Gavin, Landscape architect at The Bakery

*A unique design was sought for the newly formed upper deck courtyard and designer Diarmuid Gavin did not disappoint. His creativeness and awareness of what makes a great outdoor space will ensure his garden becomes a much used and much loved feature for residents and their visitors alike.*

*Commenting on the design, Diarmuid notes, "The historic site of the Ormeau Bakery apartments inspired us to create a garden with real presence and a collection of plants that breathe life and colour into the development all year round. The courtyard space provides a place for people to gather and relax amid lush planting and evergreen trees that enclose the space, creating an oasis of calm".*

*The evergreen trees and shrubs will form a robust structure all year round and act as a foil for a range of perennials. Grasses introduce sound and movement and contrast strongly with large leafed foliage while perennials of varying height bring colour, form and texture throughout. Specially designed lanterns provide atmospheric lumination while the dramatic three storey contemporary glazed link that crosses the courtyard reflects the scene and adds layer of visual interest. "The bold planting and inviting atmosphere creates a fusion between the indoor and outdoor spaces in a harmonising space that compliments the architecture beautifully".*



Image of the Courtyard Gardens at The Bakery



Image of the Courtyard Gardens and Glazed Link at The Bakery



FOR INFORMATION CONTACT



525 Lisburn Road, Belfast, BT9 7GQ.

TEL. 028 9066 8888

DISCLAIMER: BTWCairns Limited for the Vendors or Lessors of the property whose agents they are given notice that i) these particulars are given without responsibility of BTWCairns Limited or the Vendors or Lessors as a general outline only, for the guidance of prospective purchasers or tenants, and do not constitute the whole or any part of an offer or contract: ii) BTWCairns Limited cannot guarantee the accuracy of any description, dimensions, references to condition, necessary permissions for use and occupation and other details contained herein and any prospective purchasers or tenants should not rely on them as statements or representations of fact but must satisfy themselves by inspection or otherwise as to the accuracy of each of them; iii) no employee of BTWCairns Limited has any authority to make or give any representation or warranty or enter into any contract whatsoever in relation to the property; iv) BTWCairns Limited will not be liable, in negligence or otherwise, for any loss arising from the use of these particulars.